

UNLOCKING SOLUTIONS

United Way



Connecticut United Ways

2025 Policy Agenda



ALICE (**A**sset **L**imited, **I**ncome **C**onstrained, **E**mployed) is a national, data-driven research initiative that reveals a hidden crisis in our communities. Traditional poverty measures don't capture the full extent of financial hardship in our communities. Connecticut United Ways are committed to shedding light on this issue and unlocking solutions to ensure that everyone has the opportunity to thrive.

Connecticut has experienced many ups and downs over the last few years. But one alarming trend remains steady: the **growing number of ALICE families** in every corner of our state.

Meanwhile, our **state budget is stronger than ever** with a full budget reserve fund and consistent, record-breaking surpluses.

This stark contrast is unacceptable and demands immediate action. As this policy agenda proves, we can strengthen ALICE families and our economy at the same time.

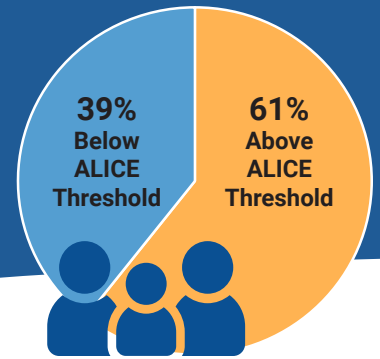
CREATE A FULLY REFUNDABLE CONNECTICUT CHILD TAX CREDIT

- Benefits 550,000 children and 75% of families.
- Returning money to families **enables them to buy essential items** that other programs don't cover.
- A strong return on investment: Every **\$1 in child tax credit generates \$1.38 benefit** to our economy.

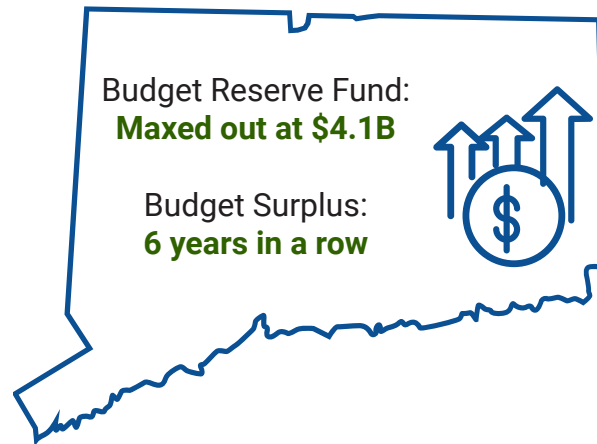
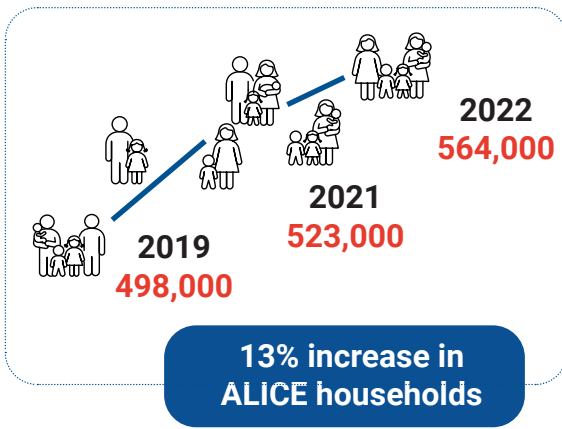
JOIN OUR MOVEMENT FOR ALICE AT
[CTUNITEDWAY.ORG/ADVOCACY](https://ctunitedway.org/advocacy)



Families living below the ALICE Threshold, the minimum income needed for households essentials in their area, are the backbone of our economy and communities. Across every zip code, race and background, they work hard but struggle to afford basic necessities like housing, child care and food. Together, we can unlock a brighter future for Connecticut where everyone has the opportunity to thrive.

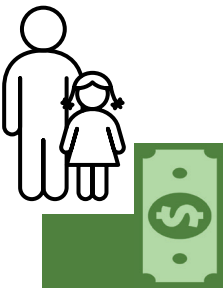


Despite historically strong state budgets, the number of ALICE households continues to rise.



Families need more resources than their jobs pay to provide for their families.

A nursing assistant raising one child:



Makes \$18/hour
Needs \$35/hour
Short: \$17/hour

Cashiers raising two children:



Makes \$32/hour
Needs \$57/hour
Short: \$25/hour

Teaching assistants raising three children:



Makes \$46/hour
Needs \$67/hour
Short: \$21/hour

Based on the hourly wage needed to reach the ALICE Threshold for one or two parents working full-time at 40 hrs/wk in a given career.

ALICE.CTUNITEDWAY.ORG

